



# SURFEX

FUTURE OF SURFACES



## WHAT ARE **SURFEX BOARDS?**

At Surfex, we revolutionize interior surfaces with our high-density Calcium Polymer Composite (CPC) boards and Matching Fluted Panels. Founded by industry veterans with over 27 years of experience, we provide innovative solutions with style and durability. We offer 27 unique colours and a seamless installation process.



MS 691





## SURFEX BOARDS **DIMENSIONS** (LENGTH X WIDTH)



Our surfaces are engineered for strength and unmatched durability with a surface hardness of **over 70 on the Shore D scale.**



# **WATERPROOF AND TERMITE PROOF**





# DIRECT-TO-WALL AND THERMOFORMABLE



MS 624

Effortless direct-to-wall application with thermoformable flexibility



# MATCHING FLUTED PANELS FOR **ENDLESS COMBINATIONS**

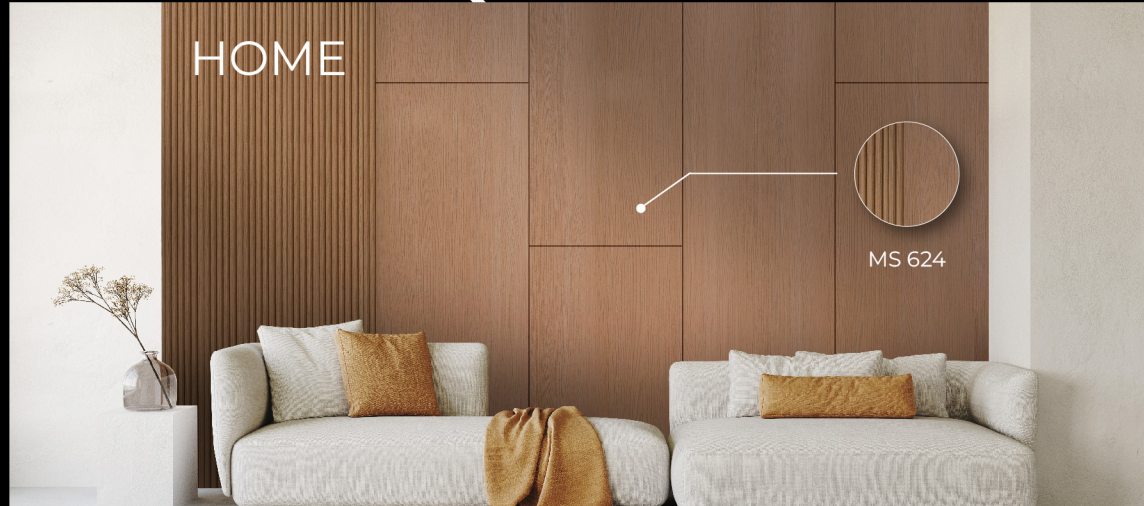


Matching fluted panels that blend style and durability for limitless design possibilities.



# ULTIMATE SOLUTION FOR INTERIORS

HOME



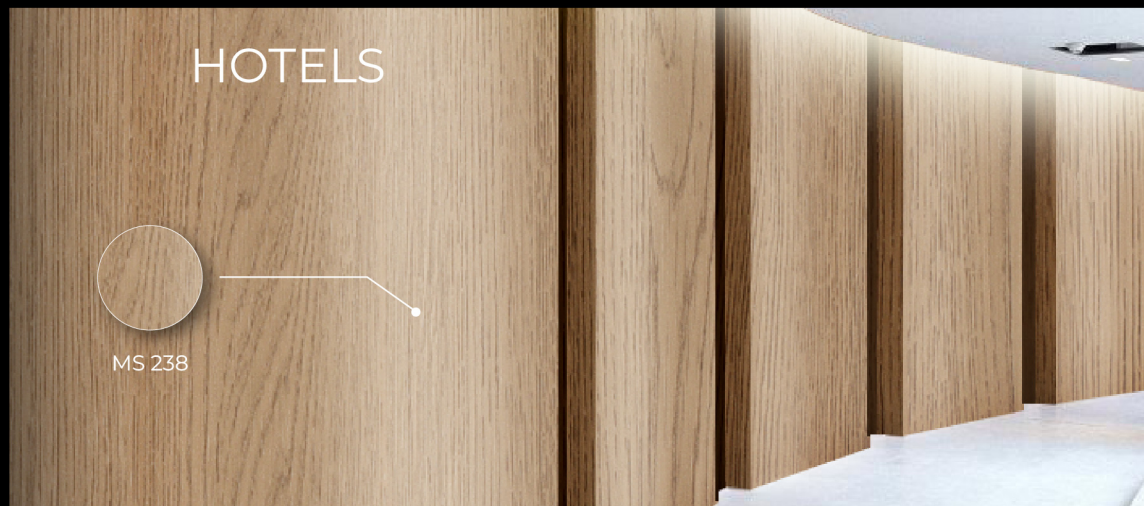
MS 624

COMMERCIAL  
SPACES



MS 5852

HOTELS



MS 238



# 1 DAY INSTALLATION





# COMPLETE SOLUTION

YOUR ALL-IN-ONE SOLUTION FOR RESIDENTIAL AND COMMERCIAL SPACES

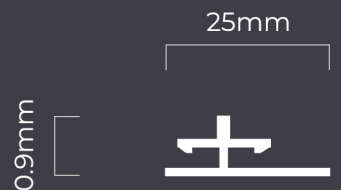
## J Profile

Perfect for edging applications, it offers a clean and minimalist finish with added protection for exposed edges



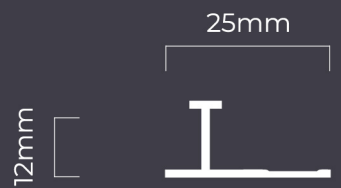
## I Profile

A simple and effective solution for connecting two panels vertically, maintaining a sleek and cohesive look.



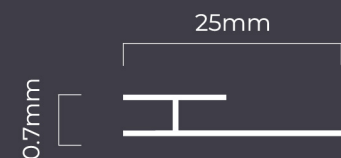
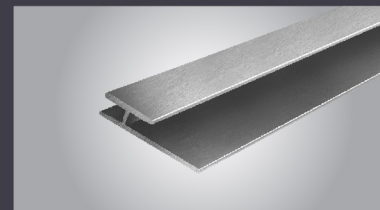
## T Profile

Bridges gaps between different surfaces, creating a smooth transition while adding a subtle design element



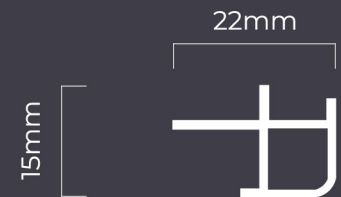
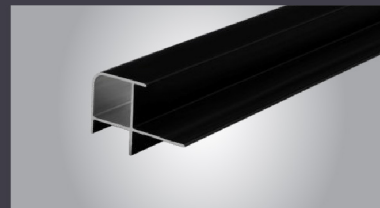
## H Profile

Provides a seamless joint between two panels, offering both aesthetic continuity and structural stability



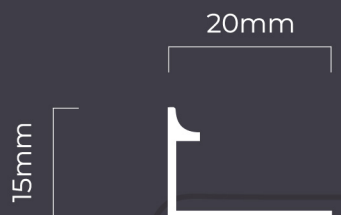
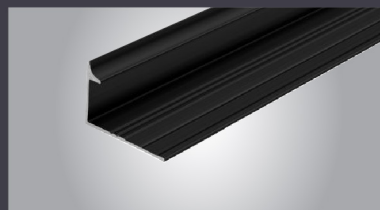
## P Profile

A flexible, decorative trim ideal for smooth transitions and finishing touches in various spaces.



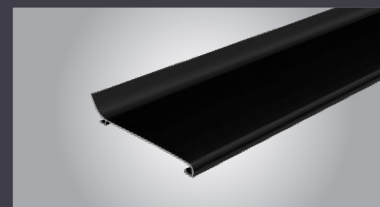
## L Profile

Frames external corners with a sharp, defined edge, ensuring style and durability.



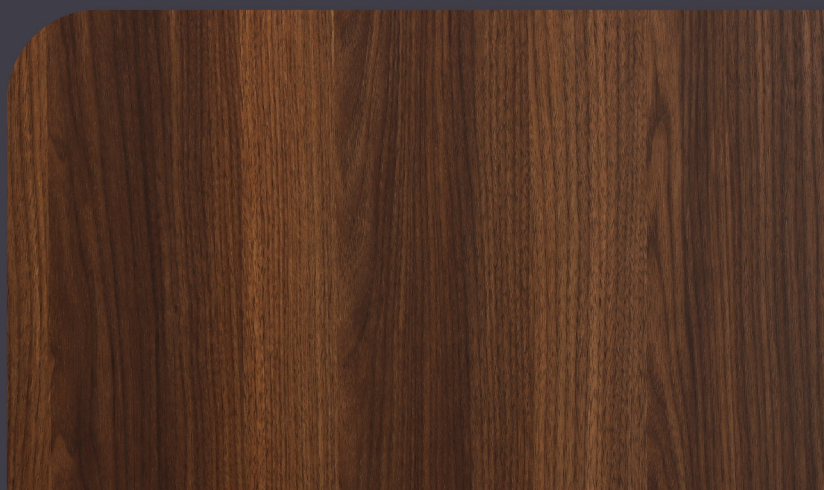
## Skirting

Adds a clean, polished edge to the base of your walls, hiding imperfections while protecting against scuffs.





# WOOD TEXTURES



MS 381 BO



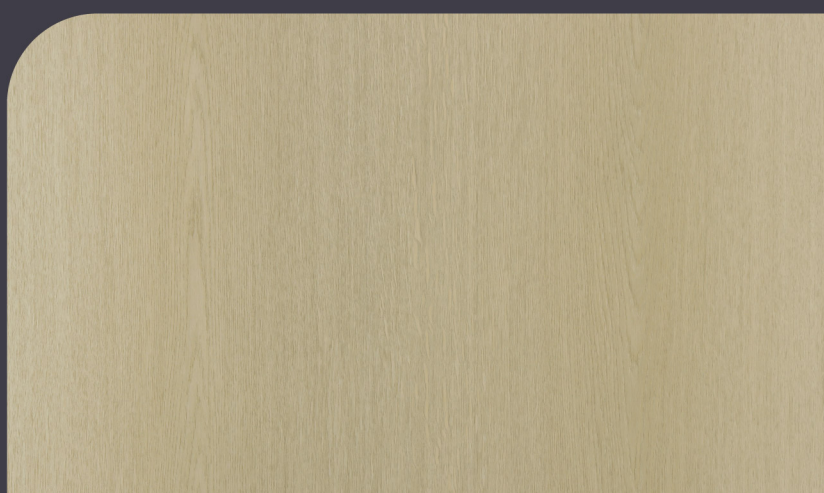
MS 381 FL



MS 691 BO



MS 691 FL



MS 693 BO



MS 693 FL

## BOARD

LENGTH - 2800 MM (9.2 FEET)  
WIDTH - 600 MM (2 FEET)  
THICKNESS - 8 MM

## FLUTE

LENGTH - 2800 MM (9.2 FEET)  
WIDTH - 150 MM (0.5 FEET)  
THICKNESS - 8 MM



# WOOD TEXTURES



MS 634 BO



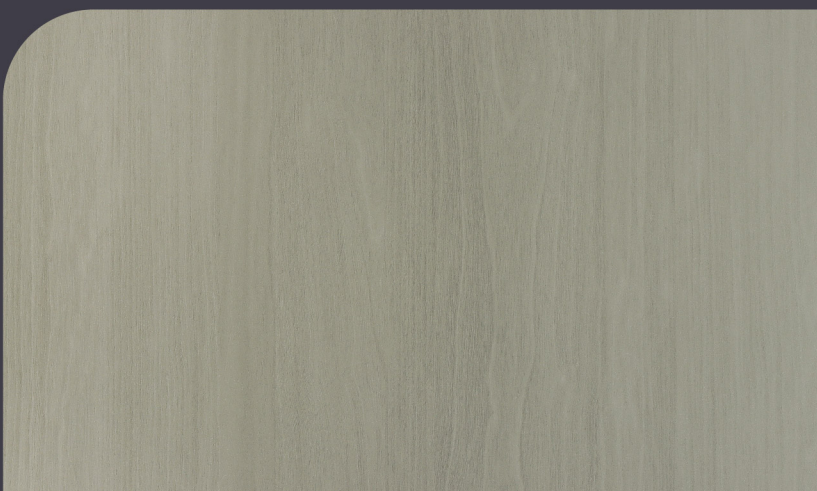
MS 634 FL



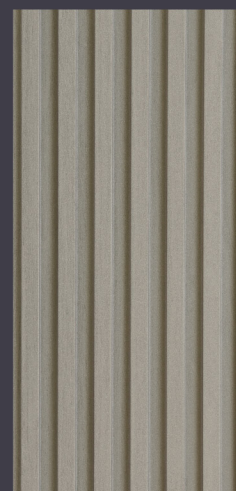
MS 636 BO



MS 636 FL



MS 632 BO



MS 632 FL

## BOARD

LENGTH - 2800 MM (9.2 FEET)  
WIDTH - 600 MM (2 FEET)  
THICKNESS - 8 MM

## FLUTE

LENGTH - 2800 MM (9.2 FEET)  
WIDTH - 150 MM (0.5 FEET)  
THICKNESS - 8 MM



# WOOD TEXTURES



MS 624 BO



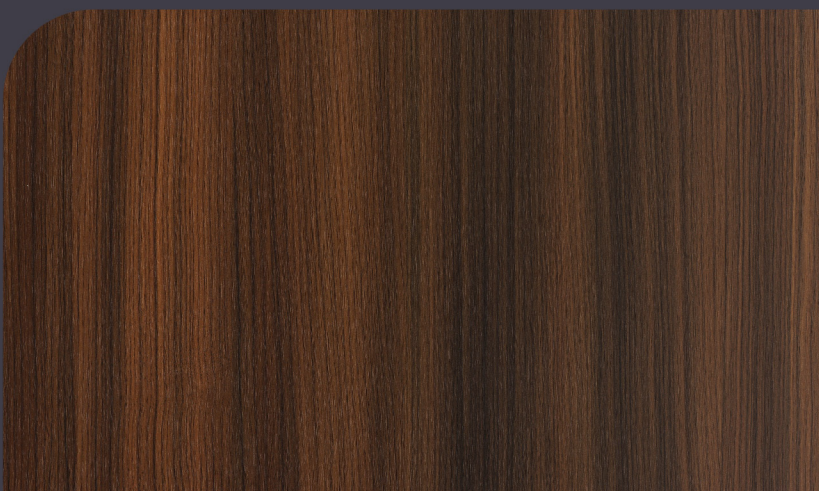
MS 624 FL



MS 238 BO



MS 238 FL



MS 108 BO



MS 108 FL

## BOARD

LENGTH - 2800 MM (9.2 FEET)  
WIDTH - 600 MM (2 FEET)  
THICKNESS - 8 MM

## FLUTE

LENGTH - 2800 MM (9.2 FEET)  
WIDTH - 150 MM (0.5 FEET)  
THICKNESS - 8 MM



# SOLID TEXTURES



ML 3658 BO\*



ML 3658 FL\*



ML 3673 BO\*



ML 3673 FL\*



ML 3688 BO\*



ML 3688 FL\*

## BOARD

LENGTH - 2800 MM (9.2 FEET)  
WIDTH - 600 MM (2 FEET)  
THICKNESS - 8 MM

## FLUTE

LENGTH - 2800 MM (9.2 FEET)  
WIDTH - 150 MM (0.5 FEET)  
THICKNESS - 8 MM



# SOLID TEXTURES



ML 3667 BO\*



ML 3667 FL\*



ML 3664 BO\*



ML 3664 FL\*



ML 3686 BO\*



ML 3686 FL\*

## BOARD

LENGTH - 2800 MM (9.2 FEET)  
 WIDTH - 600 MM (2 FEET)  
 THICKNESS - 8 MM

## FLUTE

LENGTH - 2800 MM (9.2 FEET)  
 WIDTH - 150 MM (0.5 FEET)  
 THICKNESS - 8 MM



# CONCRETE TEXTURES



MZ 972 BO\*\*



MZ 972 FL\*\*



MZ 973 BO\*\*



MZ 973 FL\*\*



MS 710 BO



MS 710 FL

## BOARD

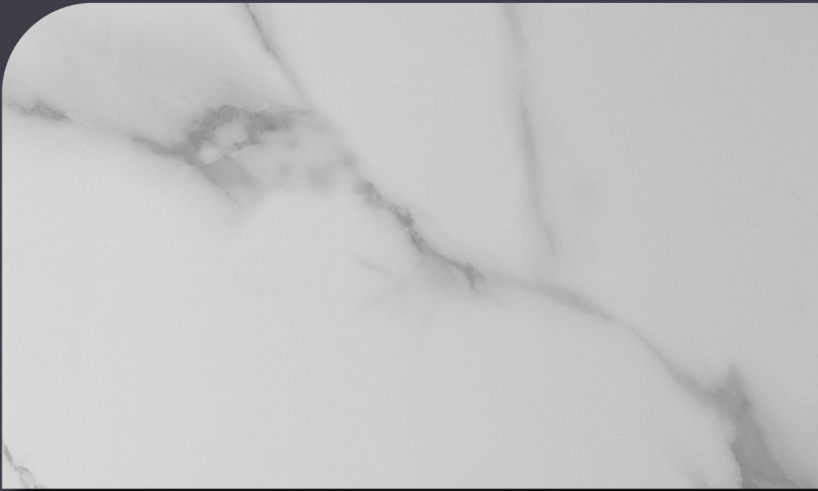
LENGTH - 2800 MM (9.2 FEET)  
WIDTH - 600 MM (2 FEET)  
THICKNESS - 8 MM

## FLUTE

LENGTH - 2800 MM (9.2 FEET)  
WIDTH - 150 MM (0.5 FEET)  
THICKNESS - 8 MM



# MARBLE TEXTURES



MS 8047 BO



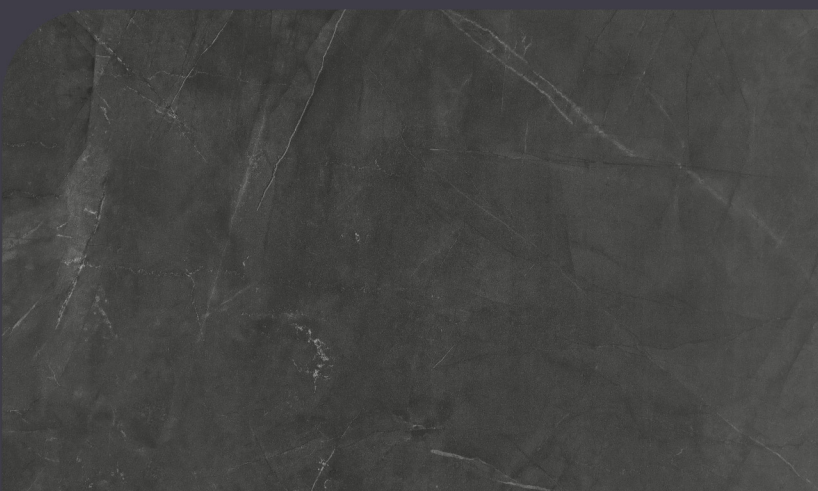
MS 8047 FL



MS 5851 BO



MS 5851 FL



MS 5852 BO



MS 5852 FL

## BOARD

LENGTH - 2800 MM (9.2 FEET)  
WIDTH - 600 MM (2 FEET)  
THICKNESS - 8 MM

## FLUTE

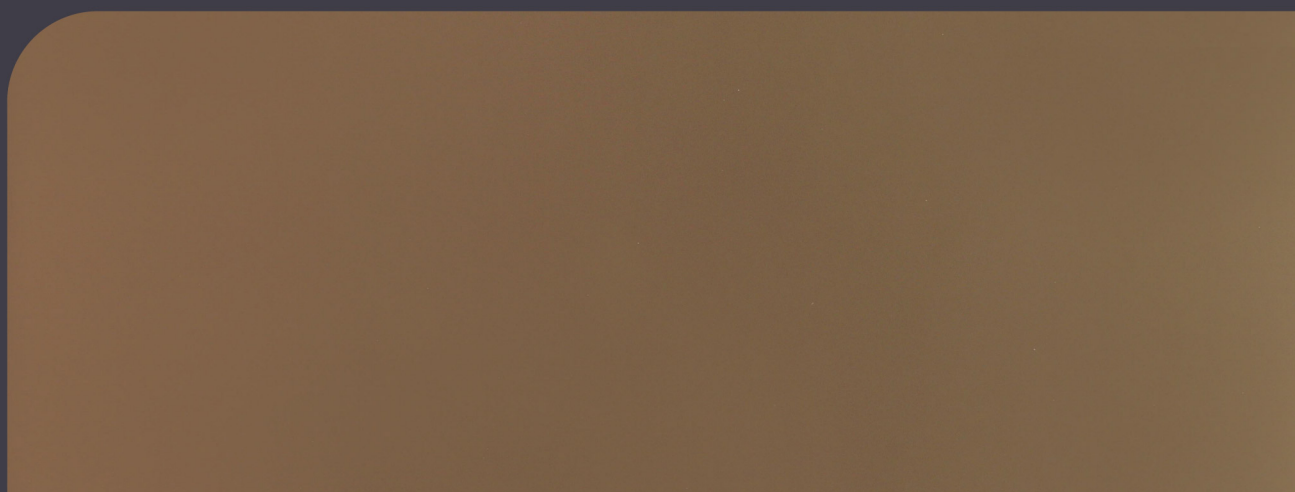
LENGTH - 2800 MM (9.2 FEET)  
WIDTH - 150 MM (0.5 FEET)  
THICKNESS - 8 MM



# METAL TEXTURES



MZ 3001 BO\*\*



MZ 3008 BO\*\*



MZ 3003 BO\*\*

## BOARD

LENGTH - 2800 MM (9.2 FEET)  
WIDTH - 600 MM (2 FEET)  
THICKNESS - 8 MM



# FABRIC TEXTURES



MS 2131 BO



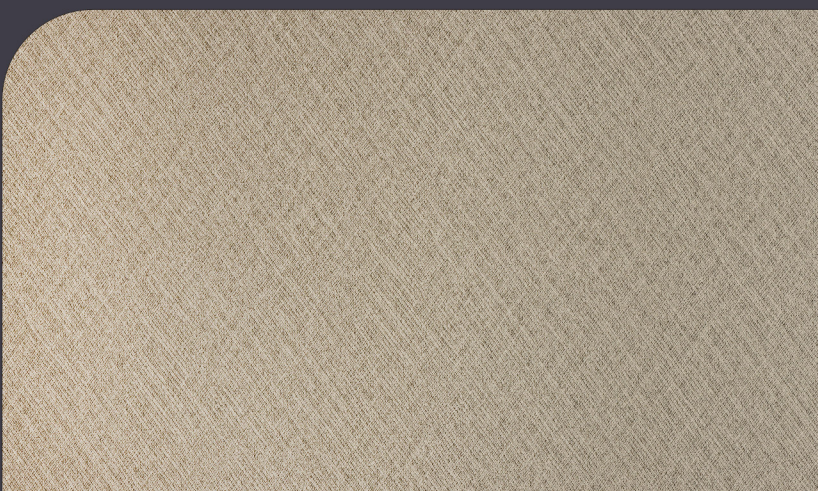
MS 2131 FL



MS 2132 BO



MS 2132 FL



MS 2133 BO



MS 2133 FL

## BOARD

LENGTH - 2800 MM (9.2 FEET)  
WIDTH - 600 MM (2 FEET)  
THICKNESS - 8 MM

## FLUTE

LENGTH - 2800 MM (9.2 FEET)  
WIDTH - 150 MM (0.5 FEET)  
THICKNESS - 8 MM



